

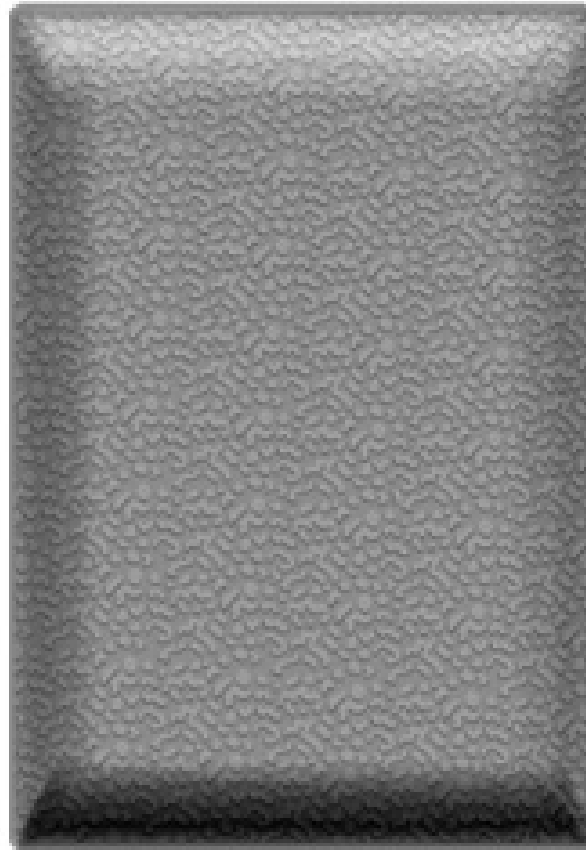


# Floor Tile

**Hb124** Navarathna

SIZE: 13.25" X 13.25"

AREA: 1.21 Sq Ft. THICKNESS: 1 INCH



## **Hb107** Fancy Paver C

AREA: 0.28 SQ. FT.  
LENGTH: 5" WIDTH: 8"  
HEIGHT: 60 MM



## **Hb106** Fancy Paver B

AREA: 0.39 SQ. FT.  
LENGTH: 7" WIDTH: 8"  
HEIGHT: 60 MM



**Hb104** Fancy Paver A

AREA: 0.61 SQ. FT.  
LENGTH: 11" WIDTH: 8"  
HEIGHT: 60 MM



**Hb268**

**Chennai Stone**

Area: 0.50 Sq. Ft. 0.046 M<sup>2</sup>

Length: 12" Width: 6"

Height: 60 mm

Required Mould for 100 Sq. Ft. : 200 Nos.

Required Mould for 10 M<sup>2</sup> : 215 Nos.



**Hb248**

**Check**

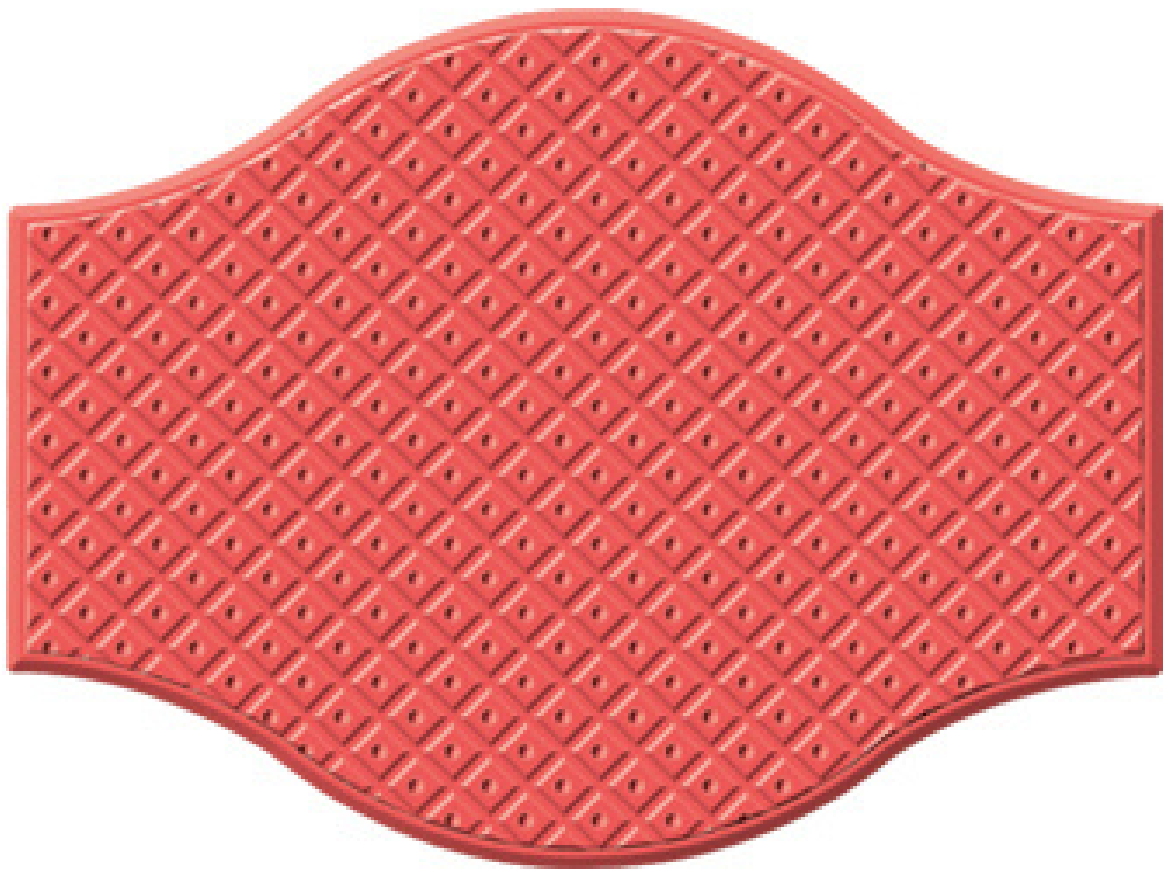
Area: 0.40 Sq. Ft. 0.041 M<sup>2</sup>

Length: 8" Width: 8"

Height: 60 mm

Required Mould For 100 Sq. Ft. : 227 Nos.

Required Mould For 10 M<sup>2</sup> : 245 Nos.



**Hb294**

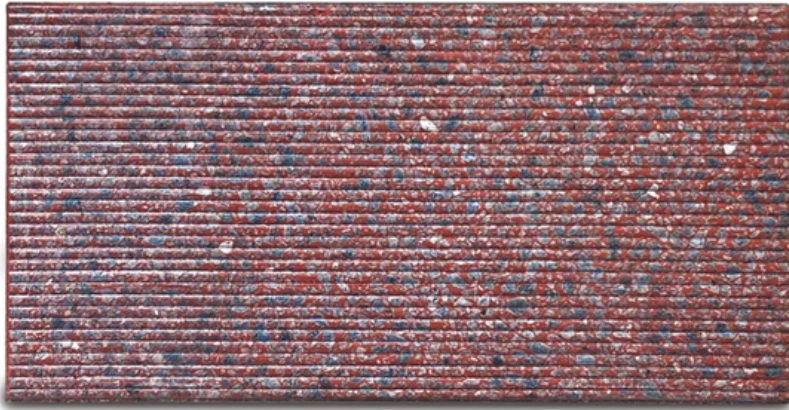
**Galaxy**

Area: 0.50 Sq. Ft. 0.046 M<sup>2</sup>

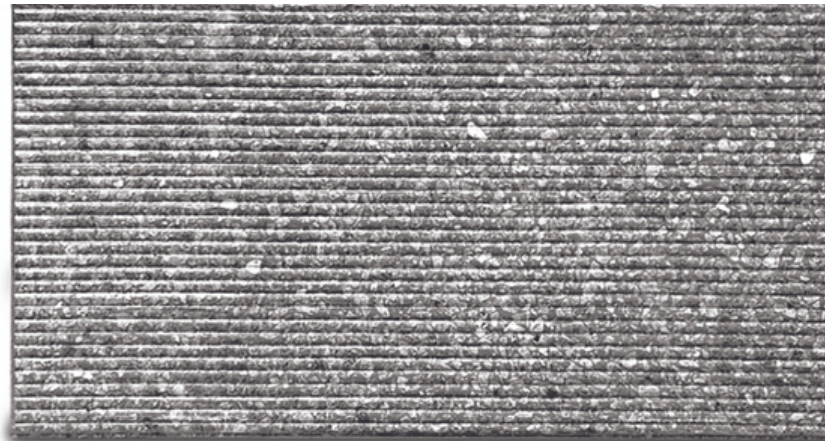
Height: 60 mm

Required Mould For 100 Sq. Ft. : 200 Nos.

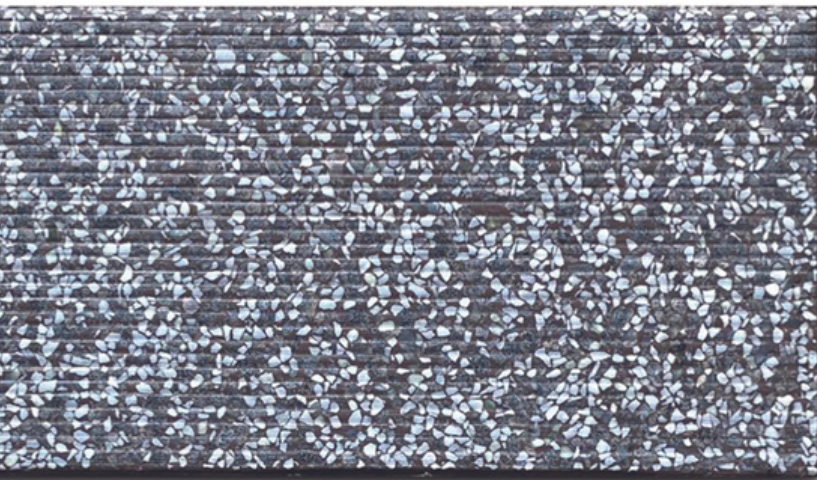
Required Mould For 10 M<sup>2</sup> : 215 Nos.



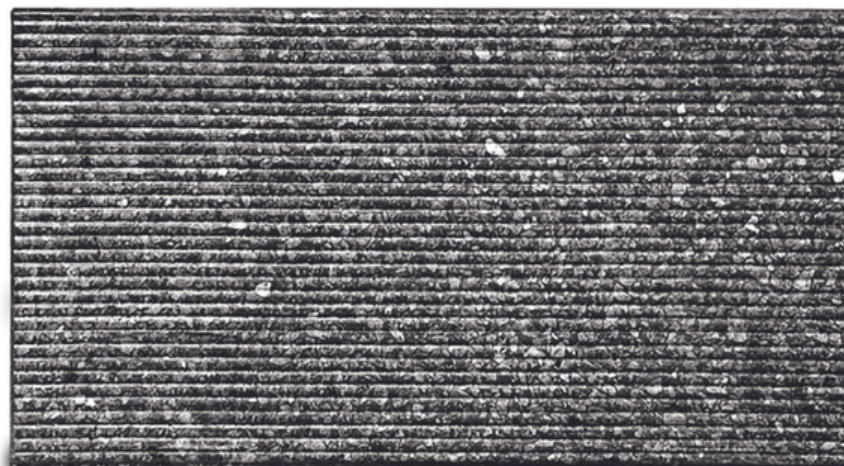
**Hb181** Red Mosaic Slab



**Hb182** Grey Mosaic Slab



**Hb180** Chips Mosaic Slab



**Hb183** Black Mosaic Slab





[www.indianbuildingmaterials.com](http://www.indianbuildingmaterials.com)



[sales@indianbuildingmaterials.com](mailto:sales@indianbuildingmaterials.com)  
[apsexportimport@gmail.com](mailto:apsexportimport@gmail.com)



+91 86 0623 7644